

# MARINE TRANSMISSION

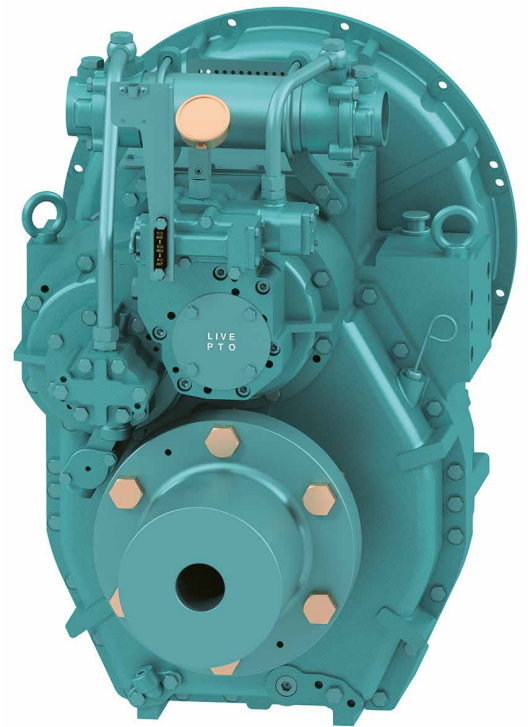
## DMT220DL

### Standard Scope Of Supply

- Bell Housing (SAE 1, 2)
- Centa Flexible Coupling (14")
- Dual Stage Coupling(11.5")
- Propeller Coupling, Reamer Bolt
- Manual Control Valve
- Oil Cooler
- Cable Bracket
- Live PTO

### Options

- Manual Trolling Valve
- Electronic Control Valve(12V, 24V)
- Manual Trolling Valve + Electronic Control Valve(12V, 24V)
- Mounting Bracket (Flat type, L type)
- Parts for Live PTO(Pump Pad, Coupling)



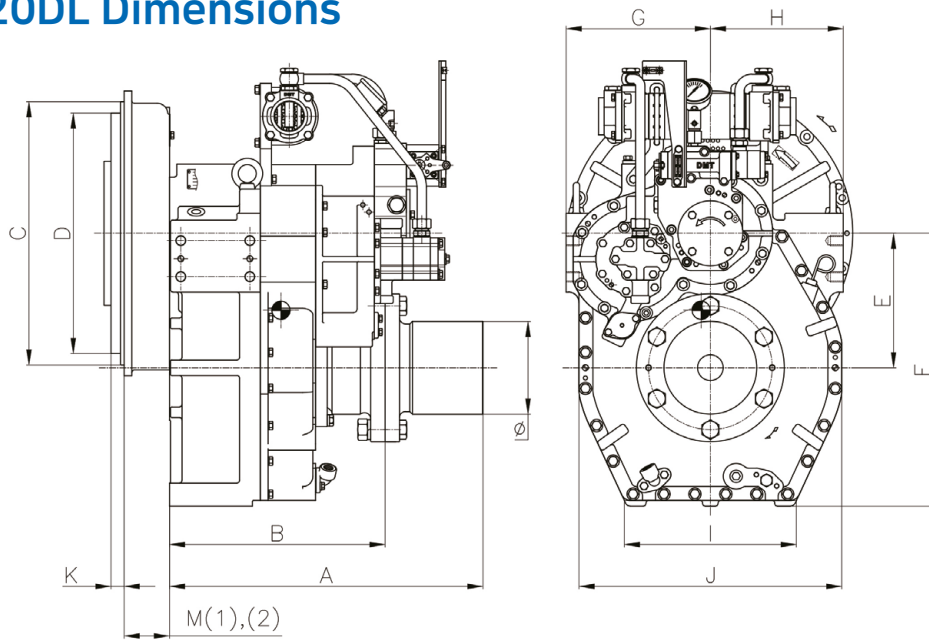
Model	Ratio	Max Input Torque		Capacity/RPM		Capacity/1800RPM		Max Input (RPM)	Bell Housing (SAE)	DRY WEIGHT (kg)
		(kgf.m)	(N.m)	kW	HP	kW	HP			
DMT220DL	3.50*, 4.04	210	2059	0.216	0.289	389	520	2500	1, 2	403
	4.47	198	1942	0.203	0.273	365	491	2500		
	4.72	177	1735	0.182	0.243	327	437	2500		

\*Special Order Ratio

※ The dry weight is the weight that excludes bell housing, coupling (rubber block, dual stage, Centa flexible) and propeller coupling from the standard scope of supply.

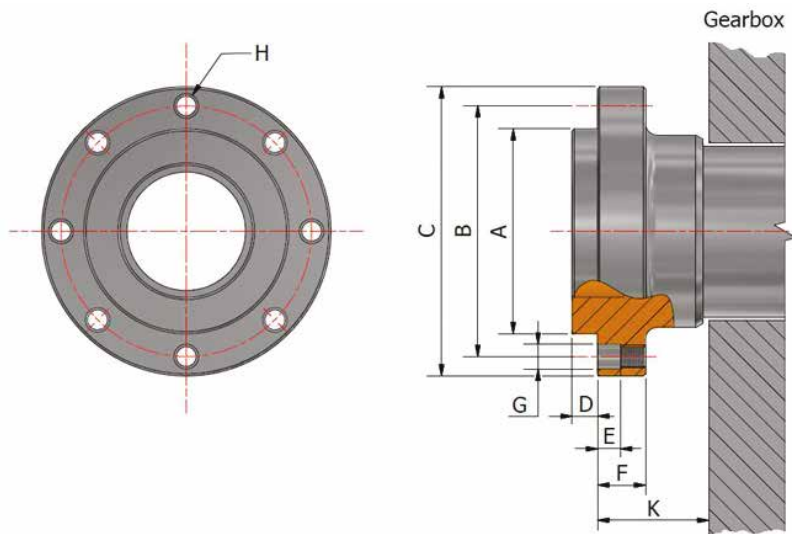
※ The capacity for classification may differ from the capacity on the table, please contact our sales team.

## DMT220DL Dimensions



mm								
A	B	E	F	G	H	I	J	Ø
609	419	261	529	280	258	334	510	180
mm								
Bell Housing Standard	Driving Ring	C	D	M(1)	M(2)	K		
SAE #1	14"	511	466	-	88	25		
SAE #2	11.5"	447	352	46	-	39		

※ M(1) : Standard Coupling Dimension, M(2) : High Flexible Coupling Dimension



mm									
A	B	C	D	E	F	G	H	K	
Ø90	$\begin{matrix} 0 \\ -0.02 \end{matrix}$	Ø110	Ø127	14.5	10	21	Ø10.9	8-M12 P1.25	