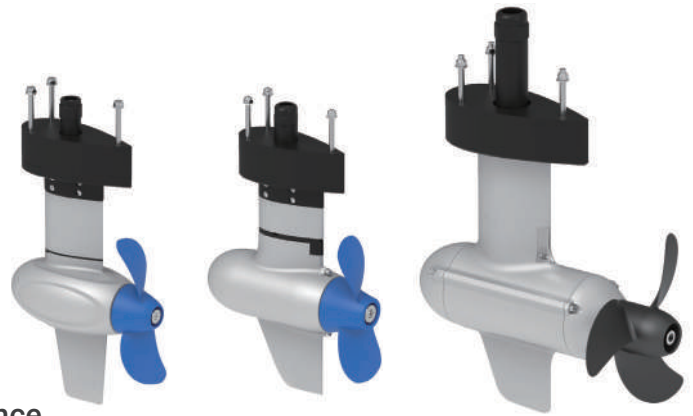


Electric Pod Drives

- Virtually Silent
- Minimum Maintenance
- No Exhaust
- No Greasy Dirt



Pod Drive 1.0 Evo
3HP

Pod Drive 3.0 Evo
6HP

Pod Drive 6.0 Evo
9.9HP

Direct-Drive

Direct drive motors don't require a gearbox to achieve the necessary torque, which means fewer moving parts and a simple mechanical structure. The advantages are smaller size, less noise and higher reliability.



Hydrogeneration

Capture the power your sailboat generates while being propelled by the wind. Hydrogeneration is a proven way to reduce or eliminate fossil-fuel charging while sailing.



Specs

	Pod Drive 1.0 Evo	Pod Drive 3.0 Evo	Pod Drive 6.0 Evo
Power	1kW / 3HP	3kW / 6HP	6kW / 9.9HP
Operation Voltage	48V (Input Range 39V - 60V)		
Weight	6.2 kg / 13.7 lbs	15.3 kg / 33.7 lbs	31kg / 68.3 lbs
Propeller	11" x 5.8" 2-blade, composite propeller	10.2" x 6.7" 2-blade, composite propeller	12.6" x 8.7" 3-blade, aluminum propeller
Static Thrust	316 N / 71 lbs	590 N / 132.6 lbs	1080 N / 242.8 lbs
Rated RPM	1200 rpm	2300 rpm	1500 rpm
Hydrogeneration	✓	✓	✓

*Weight data includes the driver box.

Electric Pod Drives **3HP - 9.9HP**

48V E-Series Lithium Battery

Original ePropulsion lithium battery made for Pod Drive Evo outboards.



E60 3072 Wh



E163 8345 Wh

- Maximum Safety**
 The intelligent battery management system (BMS) is applied to provide maximum safety for the users.
- High Energy Density**
 3 times higher energy density and 70% less weight than lead-acid batteries.*
- Real-Time Battery Monitoring**
 The display presents SOC/voltage/current/alarm information, allowing users to access the battery's operating status easily.
- Easy to Install**
 Connectors can be installed with only ONE hand. No additional tool is required.

*Under equal capacity.

Evo Controls

You could always find a control that best fits your boat.



Evo Top Mount Control



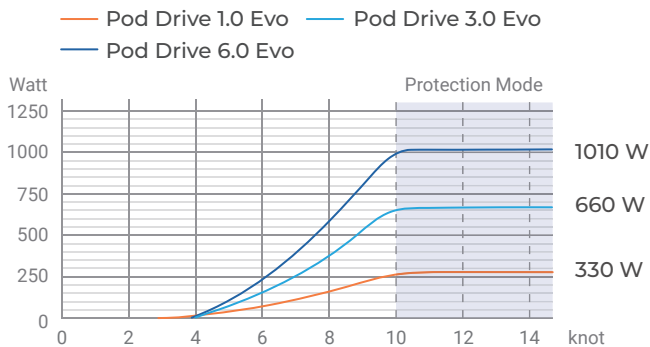
Evo Side Mount Control



Evo Dual Control

Hydrogeneration Output

Pod Drive Evo feature hydrogeneration and empower sailors to use renewable energy.



*The hydrogeneration data is based on real tests with the anti-ventilation plate installed.
 *Pod Drive Evo is tested with the 12.6" x 8.7" three-blade aluminum propeller.

Safety Wristband

In the case of man overboard, the safety wristband will shut down Pod Drive immediately. Pod Drive can connect with up to 8 safety wristbands.



Performance Sheet

Pod Drive 1.0 Evo

The data is based on a 20ft sailboat with one person and one Spirit battery in calm lake water.

Power (W)	Speed (mph / kph)	Runtime (hh:mm)	Range (mile / km)
35	1.7 / 2.7	28:35	49.1 / 78.5
65	2.2 / 3.5	15:20	33.8 / 54.2
125	3.1 / 5	8:00	24.8 / 39.7
250	3.5 / 5.6	4:00	14 / 22.4
500	4.8 / 7.7	2:00	9.6 / 15.4
750	5 / 8	1:20	6.7 / 10.7
1000	5.5 / 8.9	1:00	5.5 / 8.9

Pod Drive 3.0 Evo

The data is based on a 24ft sailboat with one person and one E60 battery in calm lake water.

Power (W)	Speed (mph / kph)	Runtime (hh:mm)	Range (mile / km)
300	3.1/5	10:14	31.7/51.2
550	4/6.4	5:35	22.3/35.7
1000	4.7/7.6	3:04	14.4/23.3
1500	5.4/8.7	2:03	11/17.8
2000	6.1/9.8	1:32	9.3/15
2500	6.7/10.8	1:14	8.2/13.2
3000	7.2/11.6	1:01	7.3/11.9

Pod Drive 6.0 Evo

The data is based on a 30ft sailboat with one person and one E163 battery in calm lake water.

Power (W)	Speed (mph / kph)	Runtime (hh:mm)	Range (mile / km)
500	4/6.4	16:41	66.7/106.8
1000	4.9/7.6	8:20	40.9/63.4
2000	5.8/9.3	4:10	24.3/38.8
3000	6.5/10.5	2:47	18/29.2
4000	7.1/11.4	2:05	14.8/23.8
5000	7.6/12.2	1:40	12.7/20.3
6000	8/12.9	1:23	11.1/17.9

*The actual speed, range, and running time may vary because of different boats, load, weather and water conditions, etc.